

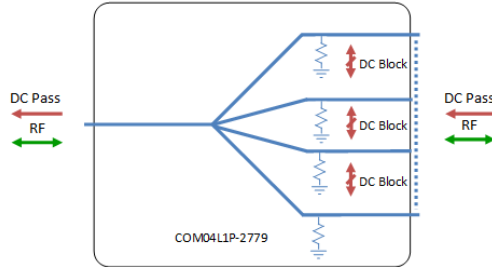


RF Components

4-Way GPS Passive Splitter/Combiner

850 - 2150 MHz

Model Number:
COM04L1P-2779



- DC pass from outputs to common port.
- DC blocked between outputs
- 333 ohm internal Load on each port

Available with RF connector options:

- 50 Ω SMA
- 50 Ω N-type
- 50 Ω BNC



850-2150 MHz
Operating frequency range. GPS ready



Compact
Housed in rugged compact enclosure

Flexible Mounting
Tapped screw & through hole mounting options

RF Parameters				
COM04L1P-2779-XXXX		S5S5	N5N5	B5B5
Frequency Range		850 - 2150 MHz		
RF Connectors		50 Ω SMA	50 Ω N-Type	50 Ω BNC
Mean Insertion Loss (dB)		1.0 \pm 0.5	1.0 \pm 0.5	1.0 \pm 0.5
Flatness \pm (dB)		0.8	0.8	0.8
Input Return Loss (dB)	Typ.	20	20	20
	Min	12	12	12
Output Return Loss (dB)	Typ.	22	22	22
	Min	15	15	15
Isolation (dB)	Typ	25	25	25
	Min	20	20	20
Amplitude Balance (dB)		\leq 0.5	\leq 0.5	\leq 0.5
Phase Balance (Φ)		\leq 5 $^\circ$	\leq 5 $^\circ$	\leq 5 $^\circ$
<p>The given Insertion Loss specified is the loss above the theoretical limit for a lossless divider 10MHz Insertion Loss is up to 3dB above the theoretical loss* 10MHz Rejection is 40dB* *To ports which are applicable</p>				

Broadcast



Marine Oil & Gas



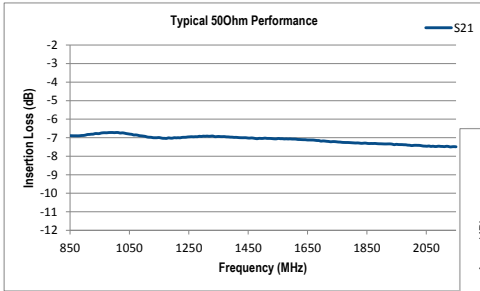
SNG & VSAT



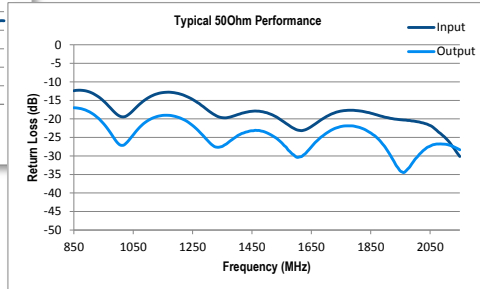
Satellite Teleport



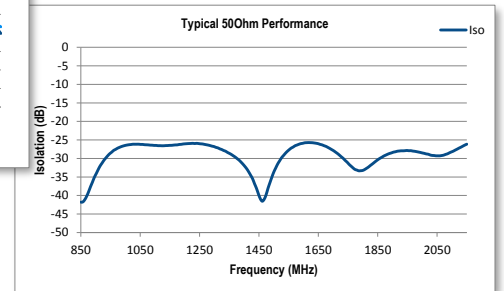
Technical specifications and operating parameters



Insertion Loss



Return Loss



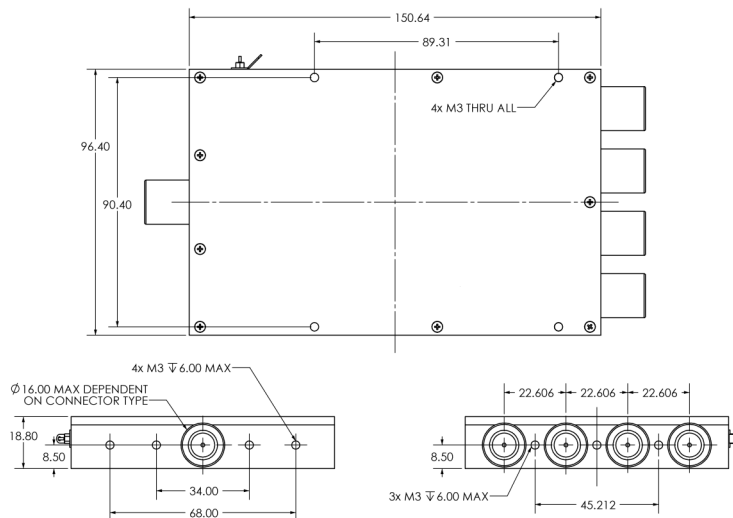
Isolation

Environmental		
Operating Temperature		0°C to +45°C
Storage Temperature		-20°C to +75°C
Location		Indoor use Only
Humidity	Max.	85% non-condensing
Altitude	Max.	10,000 feet

Max Operating Parameters	
Input RF Power into matched load with 20dB return loss	+27dBm (500mW) as combiner +37dBm (5W) as splitter
DC Voltage	8V on any RF port

! Operation beyond these limits may cause instantaneous and permanent damage.

Physical Dimensions (mm)



Note: The specification is subject to regular reviews and will be updated from time to time as part of our continuing product development and improved specification accuracy.